



Directions

WeCrete Apartments are located in Lyridiana, on the hills to the East of Kissamos at about 100 m above sea level on the old national road connecting Kissamos to Kolymbari.

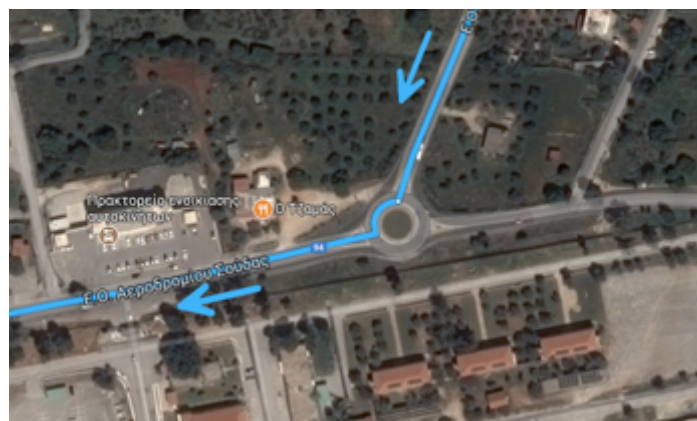
From Chania Airport to WeCrete Apartments

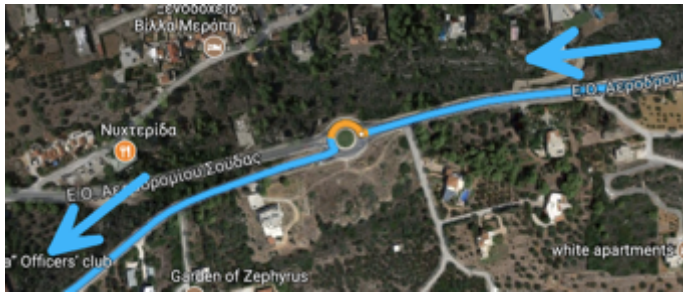
You will need about 50 minutes (52 km) to drive from Chania Airport to our Apartments. Here is how:

Short after leaving the airport **turn left** at the first junction following the sign “Rethymno”:



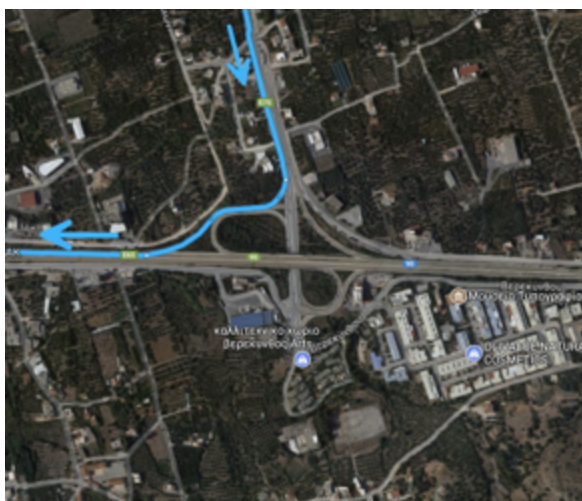
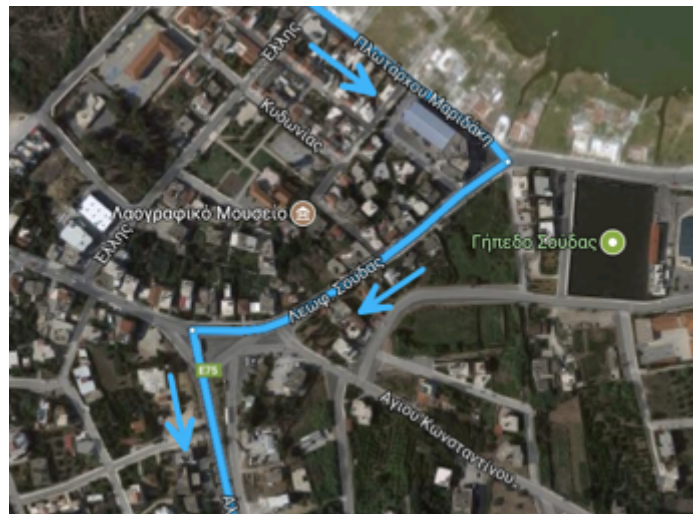
At the **first roundabout** turn right at the first exit for “Chania”:





At the **second roundabout** take the second exit, signposted "Souda":

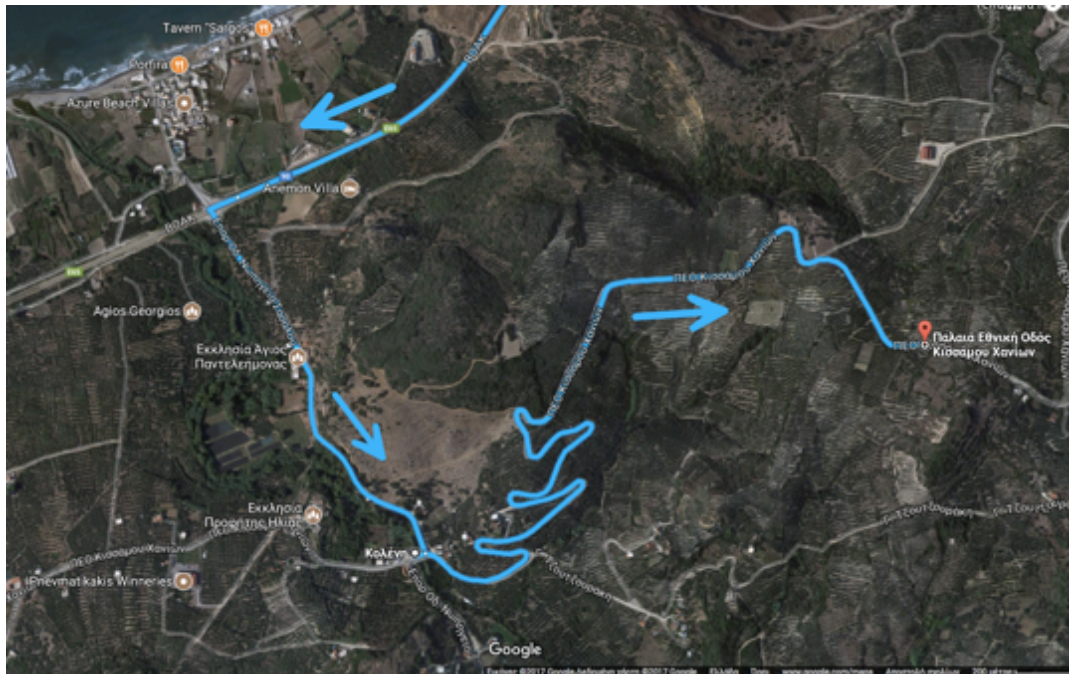
After about 5 km of descent (nice views of Souda Bay on your left) you will come to a traffic light with a SYNKA supermarket and a pharmacy on your right. **Turn right**. After about 500 m there is a big junction. **Turn left** (there is a very small sign to Kissamos opposite you) to the New National Road:



A little further you will see a **green highway sign** for Kissamos. Turn right sharply and enter the new national road:

Drive on the highway for 38 km. You will pass the exits for Chania (2), Gerani, Platanias, Tavronitis, Kolymbari and Kaledonia. After a 4-km-**descent**, you will get to

Nopigia. Turn **left** leaving the new national road and drive for 1 km to the next junction in Koleni. Take **left** slightly uphill on the old national road. After 3 km and 6 hairpins look for **the first houses** of Liridiana, on the right-hand side:



Welcome to **WeCrete Apartments!**

